

Radiatorventilhoved

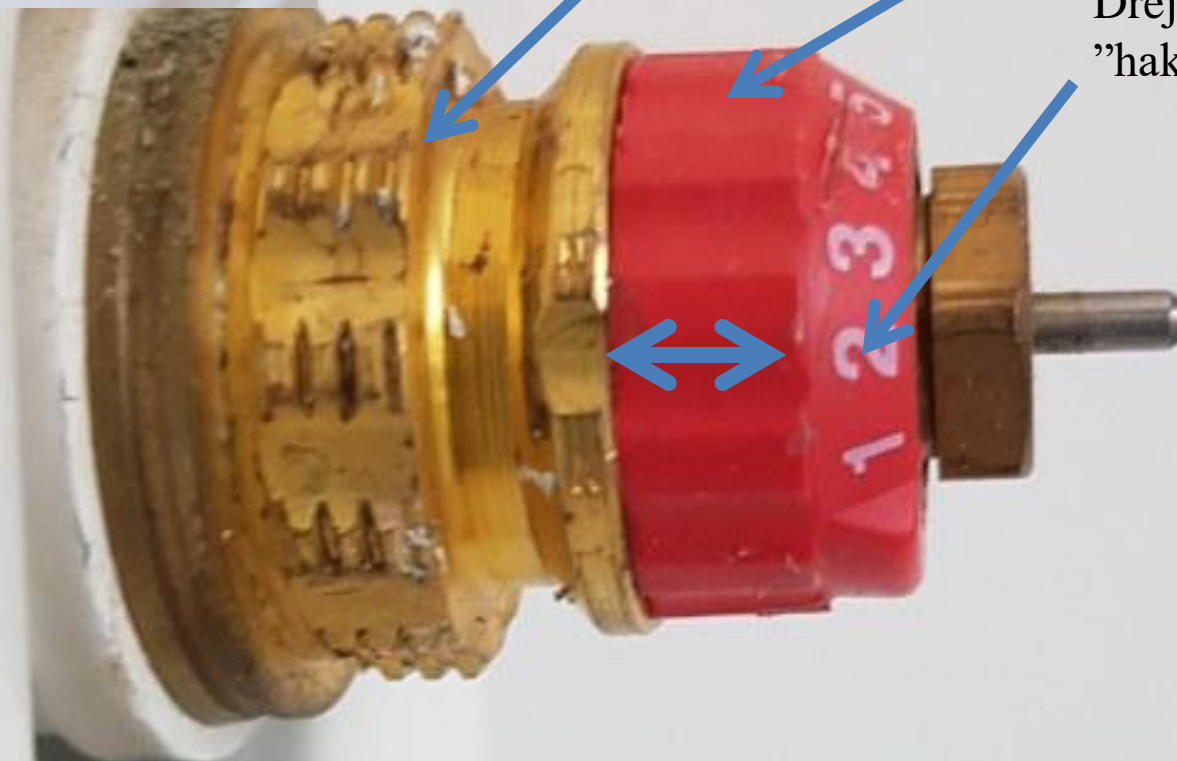


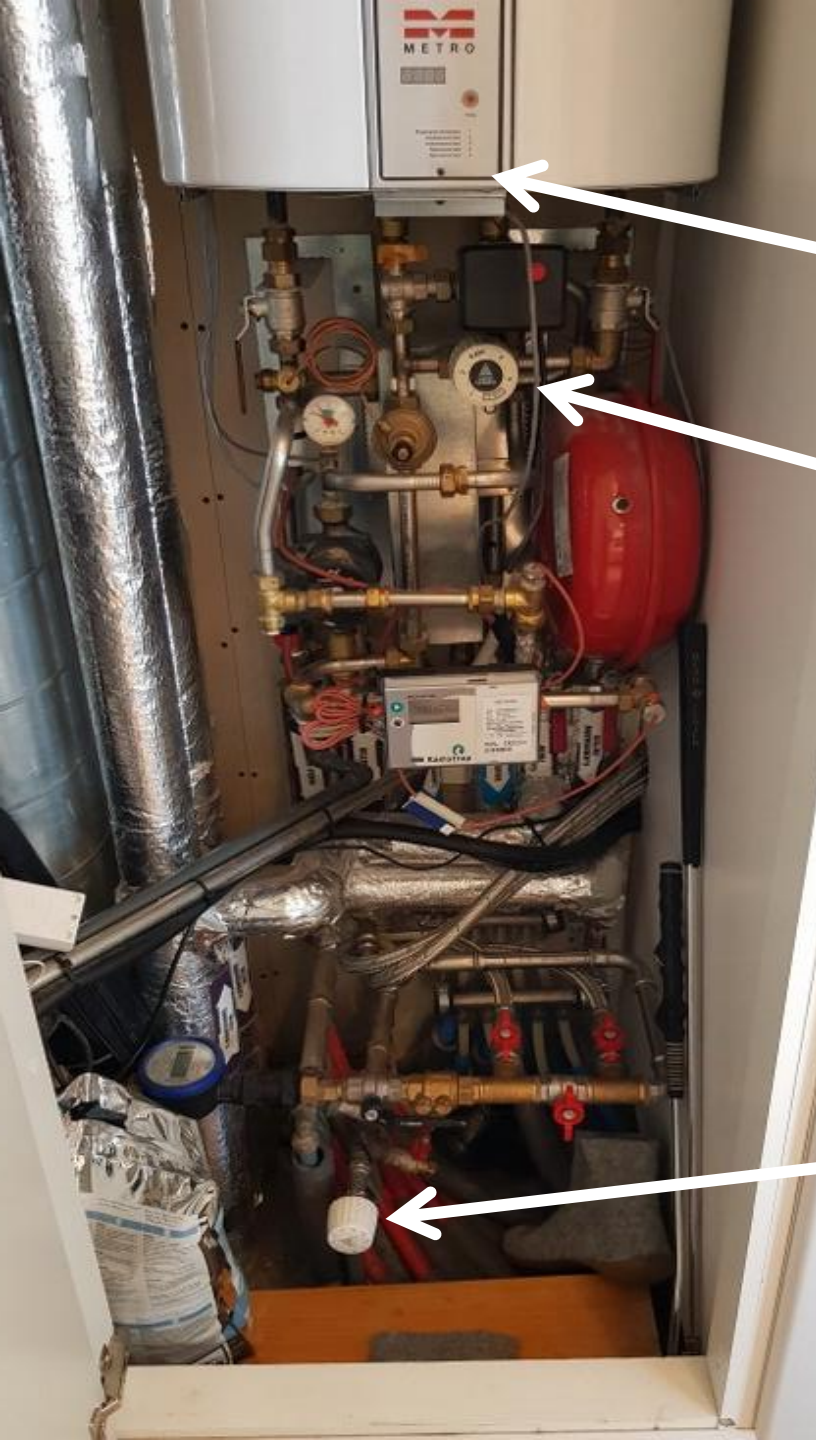
Afmonter ventilhoved

Ventilhus

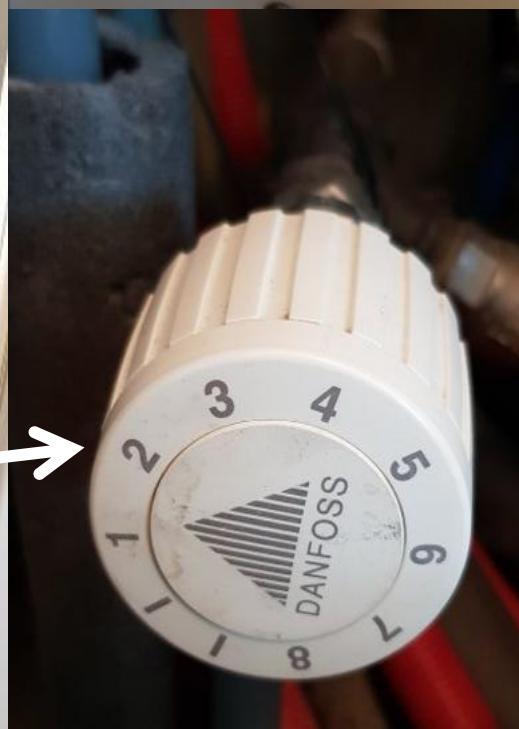
Rød "skrue"

Drejes til 2 ud for "hakket" i ventilhuset





Brugsvandstemperatur skal være minimum 50 grader, maximum 55 grader og kan indstilles på ventil under vandbeholderen



Gulvvarmeventil skal stå mellem 1,5 og 2,0

